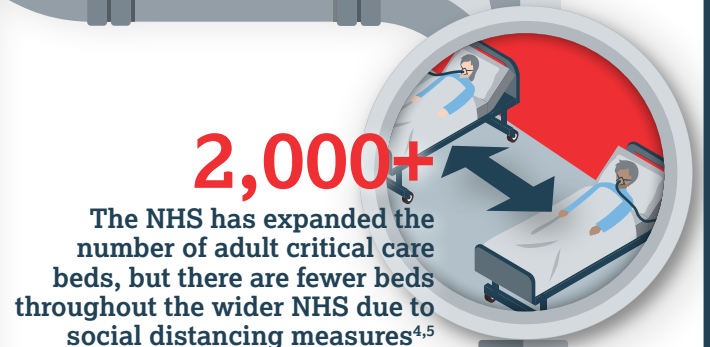
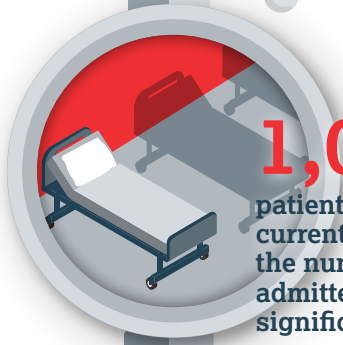
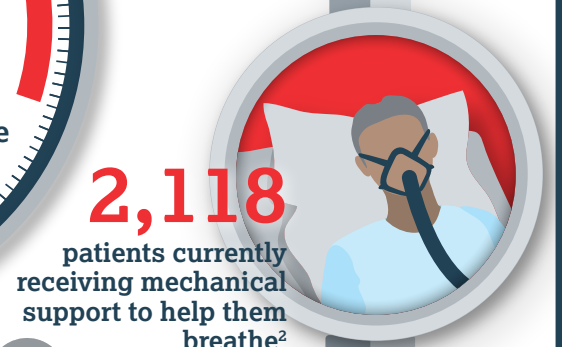


#CovidEmergency

The situation facing the NHS is real and serious, and some NHS services are at risk of being overwhelmed.

Data as of
24 February



1,2 UK Government <https://coronavirus.data.gov.uk/details/healthcare>

3 NHS England and NHS Improvement www.england.nhs.uk/statistics/statistical-work-areas/covid-19-hospital-activity/

4 NHS England and NHS Improvement www.england.nhs.uk/statistics/statistical-work-areas/uec-sitrep/urgent-and-emergency-care-daily-situation-reports-2020-21/

5 Welsh Government <https://gov.wales/winter-protection-plan-health-and-social-care-2020-2021>

6 NHS Digital <https://digital.nhs.uk/data-and-information/publications/statistical/mental-health-services-monthly-statistics/performance-october-provisional-november-2020>

7 UK Government historical data on patients admitted to intensive care units with flu are significantly lower than the numbers of patients with COVID-19 currently in intensive care www.gov.uk/government/statistics/annual-flu-reports

*Data refers to the NHS in England only

